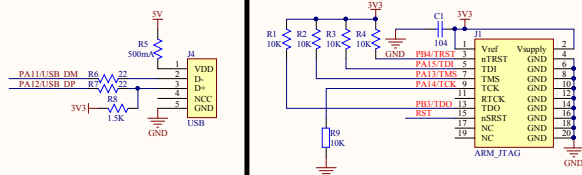
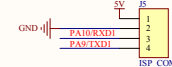


系统稳压供电



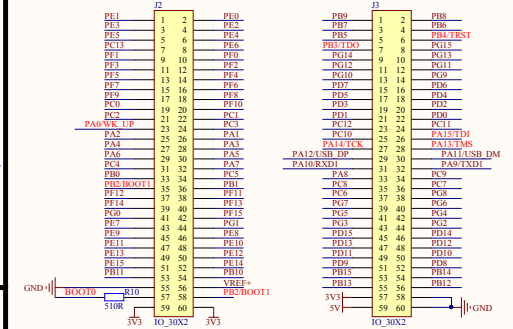
STM32-USB Slave接口



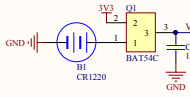
ISP串口接口

Table with 2 columns: BOOT0/BOOT1 status (0, 1) and Boot Mode (Normal, ISP download mode, Internal RAM).

STM32工作模式已经默认接地: 通过J2和R25接地 正常工作, 跳线帽不用插, 如果需要其他工作模式可以 以改换跳线帽插方式, 板子默认都带跳线帽 跳线帽为了方便板子携带, 默认插到闪存区



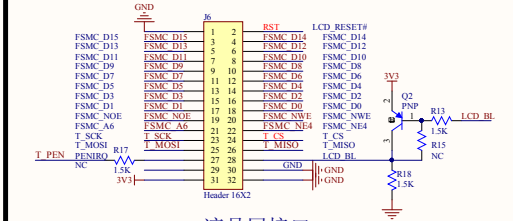
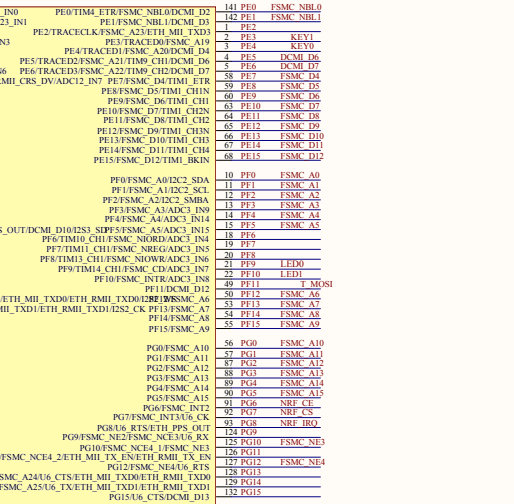
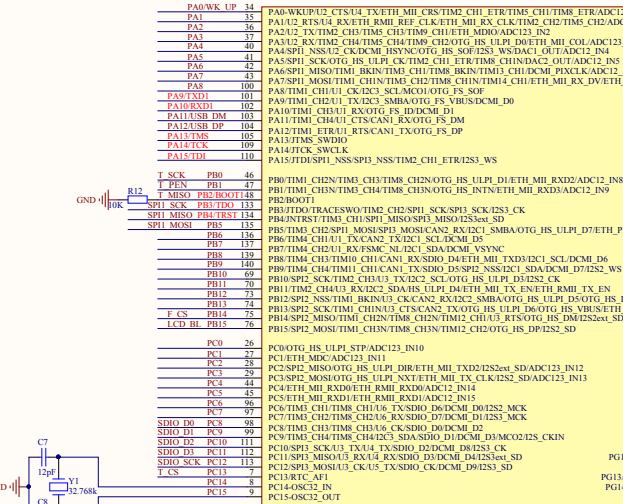
系统可用I/O外引接口



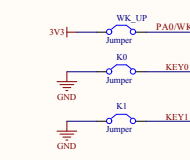
RTC时钟备用电池

F407ZET6或F407ZGT6主控

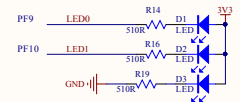
RAM: 192K FLASH: 512K或1024K 最高主频: 168MHz



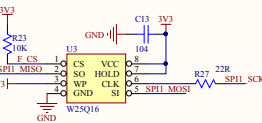
TFT液晶屏接口



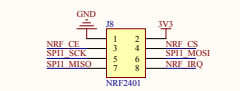
用户自定义按键



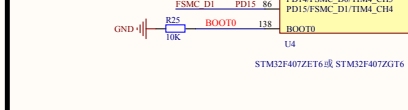
自定义LED指示灯



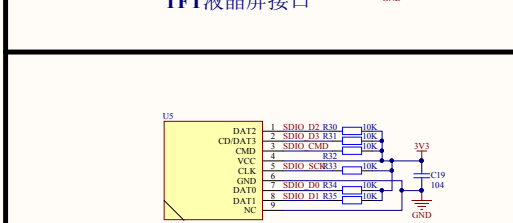
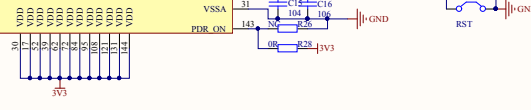
FLASH-W25Q16



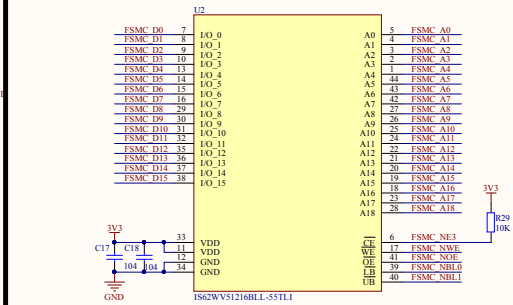
nRF24L01无线模块接口



STM32F407ZET6或STM32F407ZGT6

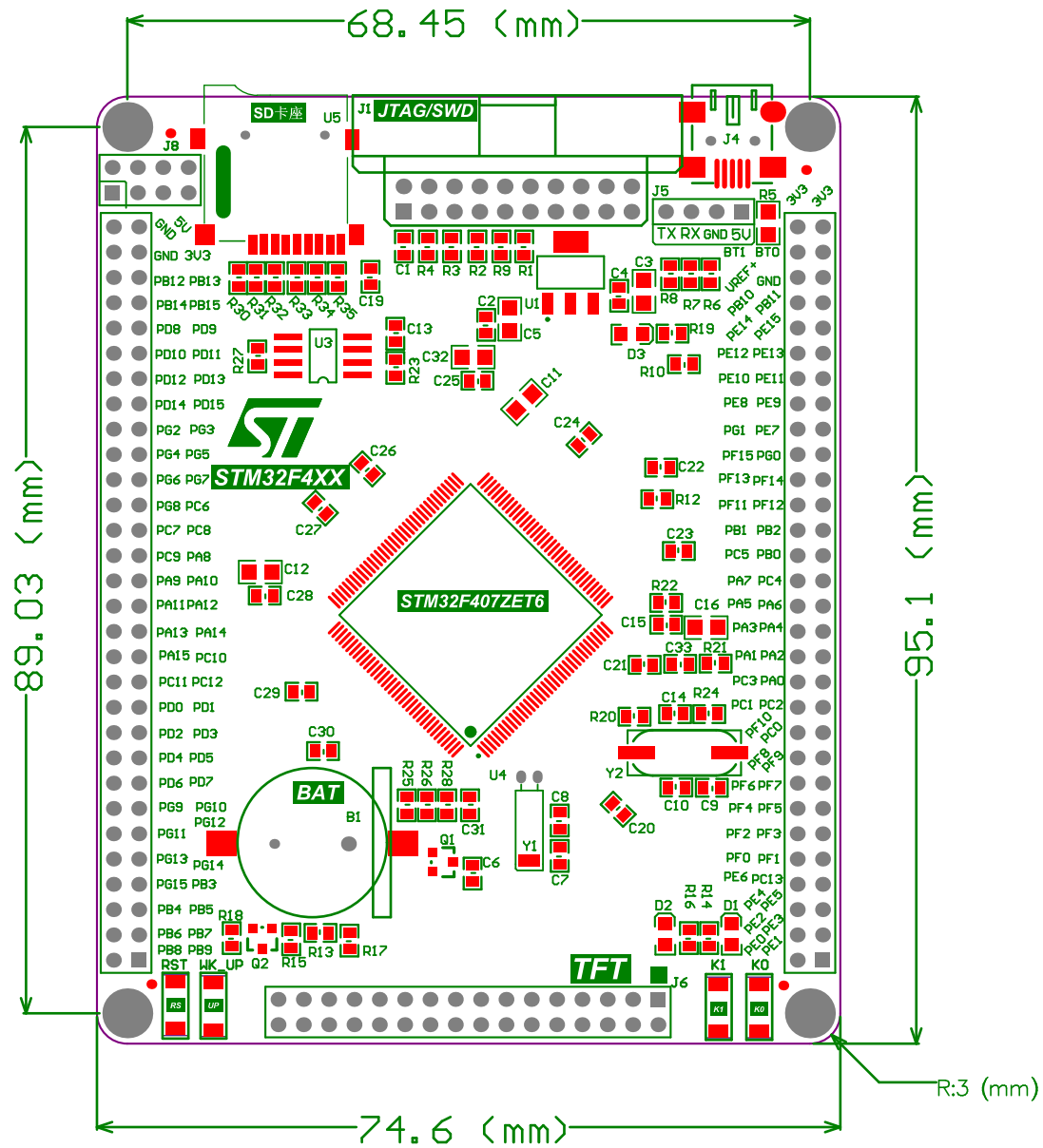


SD存储卡座



SDRAM内存模块 (预留未焊接)

Title: STM32F407Zxxx核心板. Table with columns: Size (A2), Number (嵌入式开发网精品店), Revision (mocodev.taobao.com). Title: 嵌入式开发网精品店mocodev.taobao.com出品.



Bill of Materials <Parameter Title not found>

Source Data From: STM32_F407.PrjPCB
 Project: STM32_F407.PrjPCB
 Variant: None

Creation Date: 2017-5-14 16:17:47
 Print Date: 42869 42869.67907

Footprint	Comment	LibRef	Designator	Description	Quantity
CP1220		BATTERY	B1		1
RC0603	104	Cap, Cap, CAP, CAP, CAP, CAP, CAP, Cap, Cap, Cap Semi, CAP, CAP, CAP, CAP, CAP, CAP, CAP, CAP, CAP	C1, C2, C4, C6, C13, C14, C15, C17, C19, C20, C21, C22, C23, C24, C25, C27, C28, C29, C30, C31, C33	Capacitor, Capacitor, [NoValue], Capacitor, [NoValue], Capacitor, Capacitor, Capacitor, Capacitor, Capacitor (Semiconductor SIM Model), Capacitor, Capacitor, Capacitor, Capacitor, Capacitor, Capacitor, Capacitor, Capacitor, Ca	23
RC0805	106	CAP2, CAP2, CAP, CAPACITOR POL	C3, C5, C16, C32	[NoValue], [NoValue], Capacitor, Capacitor	4
RC0603	12pF	CAP	C7, C8	Capcitor	2
RC0603	22pF	CAP	C9, C10	Capcitor	2
RC0805	225	CAP	C11, C12	Capcitor	2
LED0805	LED	LED	D1, D2, D3		3
JTAG20P	ARM_JTAG	JTAG	J1	JTAG	1
IDE2X30	IO_30X2	Header 30X2	J2, J3	Header, 30-Pin, Dual row	2
MINUSB	USB	usb	J4		1
HDR1X4	ISP_COM	Header 4	J5	Header, 4-Pin	1
IDE2X16-2.54	Header 16X2	Header 16X2	J6	Header, 16-Pin, Dual row	1
DIP2X4-2.54	NRF2401	Header 4X2	J8	Header, 4-Pin, Dual row	1
key	Jumper	Jumper	K0, K1, WK_UP	Jumper Wire	3
BAT54C	BAT54C	BAT54C	Q1		1
PNP_SOT23	PNP	PNP	Q2	PNP Bipolar Transistor	1
RC0603	10K	RES, RES, RES, RES, Res2, Res2, Res2, Res2, Res2, Res2, Res2	R1, R2, R3, R4, R9, R12, R23, R24, R25, R29, R30, R31, R32, R33, R34, R35	[NoValue], [NoValue], [NoValue], [NoValue], Resistor, Resistor, [NoValue], Resistor, Resistor, Resistor, Resistor, Resistor, Resistor, Resistor	16
RC0805	500mA	RES	R5		1
RC0603	22	RES	R6, R7		2
RC0603	1.5K	RES	R8, R13, R17, R18		4
RC0603	510R	Res2, RES, RES, RES	R10, R14, R16, R19	Resistor, [NoValue], [NoValue], [NoValue]	4
RC0603	NC	RES, Res2	R15, R26	[NoValue], Resistor	2
RC0603	1M	Res1	R20	Resistor	1
RC0603	0R	Res2	R21, R22, R28	Resistor	3
RC0603	22R	RES	R27		1
key	Key	Jumper	RST	Jumper Wire	1
SOT223	AMS1117-3.3V	11	U1		1
TSOP44	IS62WV51216B	IS62WV51216B	U2		1
SOIC8P	L-55TLI	L-55TLI	U3		1
W25Q16	W25Q16	W25X16	U3		1
LQFP144N	STM32F407ZET6 或 STM32F407ZG6	STM32F407ZET6	U4	STM32F407ZET6	1
TF_SD	MiniSD	MiniSD	U5		1
32.768k	32.768k	CRYSTAL	Y1	Crystal 8MHz PLUG	1
SMD49S	8MHz	XTAL	Y2	Crystal Oscillator	1
					91

Approved	Notes